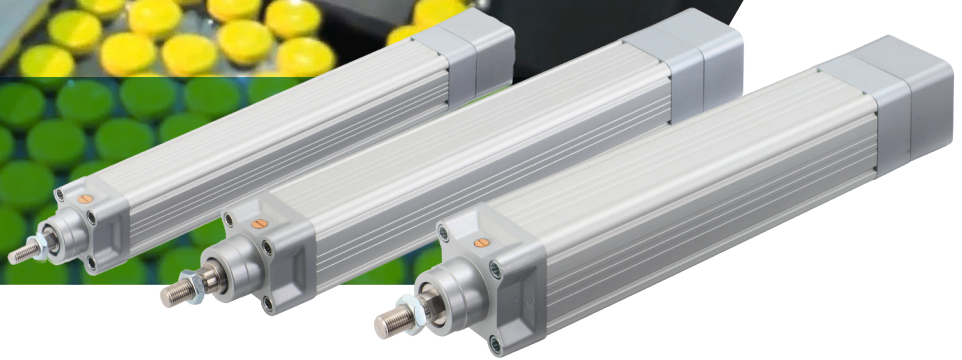


AVENTICS™ Series SPRA Electric Rod-Style Linear Actuator

An efficient and high performance solution



Fast and powerful linear movement with high precision and efficiency

- **Flexible and versatile** - The Series SPRA has three different screw technologies to cover a wide range of application requirements. It is also compliant with ISO 15552 standard to offer wide range of accessories.
- **Improve sustainability and reduce Total Cost of Ownership** - Select the best (most energy efficient) solution for your unique application, with one supplier, using a low energy consumption.
- **Process repeatability** - Motion profile parameters can be saved and recalled at each machine to ensure a reproduceable process with increased accuracy, ensuring uniformity and consistency of output.
- **Save (engineering) time** - Easily size and customize your electrical actuator solution with interconnected online tools and configurator.

AVENTICS™


EMERSON™

CONSIDER IT SOLVED™

Enhance load capacity, accuracy and reliability

In addition to providing outstanding precision and repeatability, the Series SPRA electric rod-style linear actuator is also extremely versatile and flexible, with a choice of three different screw technologies that allow implementation within a wide range of applications and can meet exacting application requirements. Compliance with the ISO-15552 standard, online selection tools and a wide range of mounting accessories ensures the appropriate implementation.

Versatile Screw Technology

The Series SPRA has three different screw technologies to cover a wide range of application requirements:

Lead screws – High static force, withstands excessive vibration, operates quietly, and is cost-effective. Ideally suited for self-locking applications.

Precision rolled ball screws – High-performance solution suitable for a wide range of applications, including those requiring high loads, precision and durability.

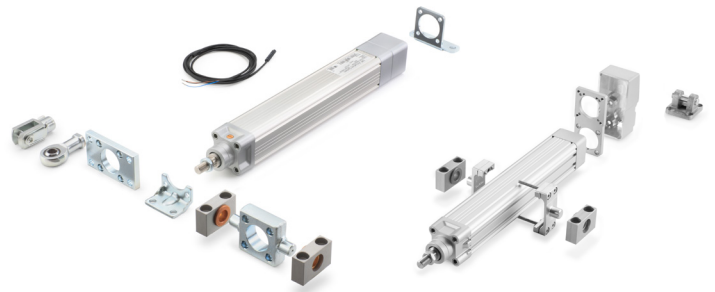
Roller screws – Suitable for very high-precision applications, heavy loads, high speed and harsh environment.



Flexible – Wide Range of Accessories and Mounting Options

The Series SPRA comes with a wide range of mountings, including mounting front/rear flange, feet, front/rear swivel trunnion and more.

The motor of choice can be mounted on the Series SPRA electric actuator both in line and parallel, depending on the requirements of your application.



Reduce Engineering Time with the Online Tools

Selection, configuration and customization has never been so easy thanks to the online tools. You can use the MotionFinder online sizing tool to select the appropriate electrical actuator, based on the application data you provide. After that, you can use the online configurator to customize your own cylinder, add accessories, download CAD files and buy online – without the need to register. Furthermore you can download the catalog pages online and other engineering files.

Use the online sizing software MotionFinder:



Configure your own Series SPRA online:



Learn more and download documents such as catalog pages:



AVENTICS™ Learn more: www.Emerson.com/AVENTICS

